

IN ADDITION

- A TR staff member will assist with your child's celebration.
- A variety of craft project options will be available for the event, and can be selected at the time of reservation.
- Children will have the opportunity to participate in fun and interactive games led by a TR staff member.
- Sensory equipment includes bean bag chairs, small rebounder trampoline and large balance balls.

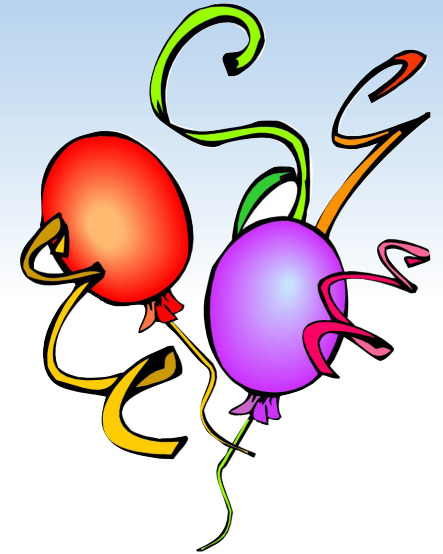


*Somerset County
Park Commission*

Therapeutic Recreation Department
355 Milltown Road, North Branch Park
Bridgewater, NJ 08807
(Within North Branch Park) 908 526-5650
www.somersetcountyparks.org

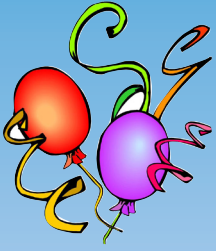
Follow us on Facebook and Twitter:
[facebook.com/SomersetCountyParkCommission](https://www.facebook.com/SomersetCountyParkCommission)
<https://twitter.com/scparksnj>

Celebrate Your Birthday With Us

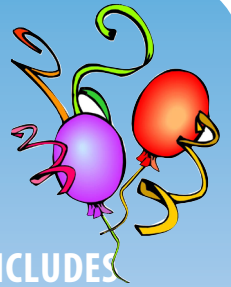


*Somerset County
Park Commission*

Therapeutic Recreation Department



Have a Party with Us!



WHERE

Somerset County Park Commission
Therapeutic Recreation Activity Center
North Branch Park
355 Milltown Road
Bridgewater, NJ 08807
908 526-5650
For individuals with hearing/speech
impairments use the NJ Relay Service
@ 711.

WHEN

Select Saturdays to be determined at the
time of reservation.
10:30 am - 12:30 pm
1:30 pm - 3:30 pm

FOR

Children ages 6 - 13 with a developmental
disability who reside in Somerset County
in a TR participating municipality.

The basic party package accommodates
12 - 15 children with a maximum of 30
people (including children and adults).
At least one parent must remain with each
child for the party.

COST

\$175.00 for the entire party package



TO MAKE A RESERVATION

Please contact the Therapeutic Recreation depart-
ment at 908 526-5650 Monday - Friday between
the hours of 8:00 am and 4:30 pm. Reservations
must be made at least one month prior to the date
of the party.

DEPOSIT

A \$75.00 non-refundable deposit required at the
time of the reservation. Payment can be made by
credit card, check, or cash. Balance of payment is
due one week prior to the event.

THE PARTY PACKAGE INCLUDES

- ★ Two - hour party room rental
(We supply tables and chairs)
- ★ TR staff person
- ★ Basic birthday party decorations
- ★ Use of sensory equipment
- ★ Group Games
- ★ Craft *(selection at time of reservation)*
- ★ Cleanup

Items including food, birthday cake, paper
goods, table clothes and goodie bags are to
be provided by the host family.



NO ALCOHOLIC BEVERAGES ARE
PERMITTED ON PARK PROPERTY